

# JMH Retrofit LCD Signs Photo Gallery

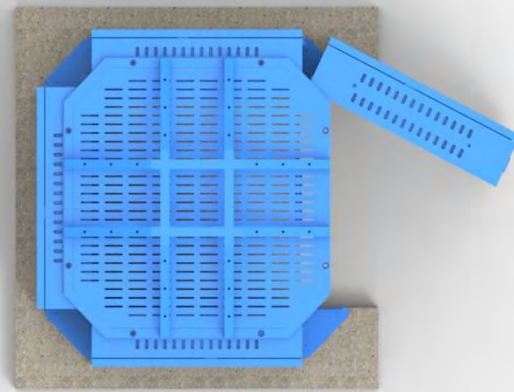
March 15, 2019 – March 27, 2019

Jackson Memorial Hospital  
University of Miami  
Miami, Florida



LCD Signs Site One  
Door opening direction  
Jackson Memorial Hospital, Miami, Florida

JHS01(NORTH) S/N #10



JHS04(WEST) S/N #09

JHS02 (EAST) S/N #11

JHS03(SOUHT) S/N #12



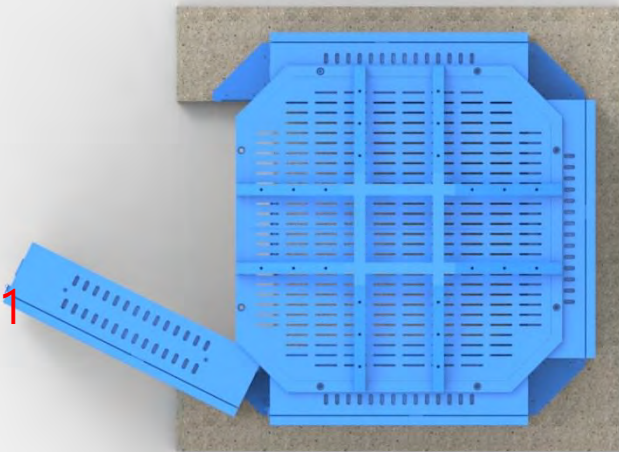
# LCD Signs Site Two

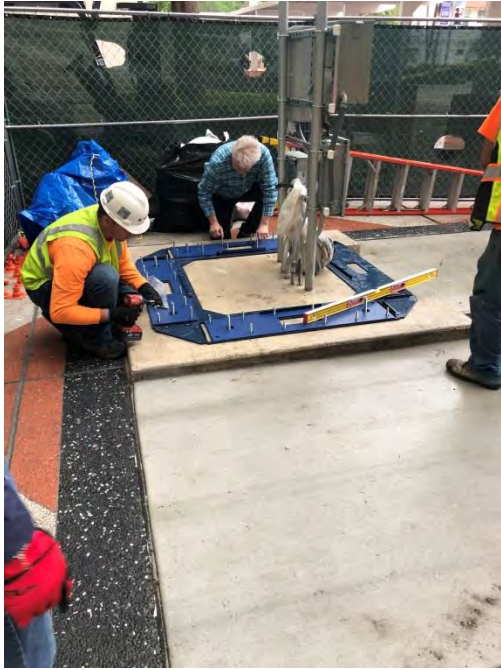
North Site-2 S/N# 02

West Site-2 S/N#01

East Site-2 S/N #03

South Site-2 S/N #04





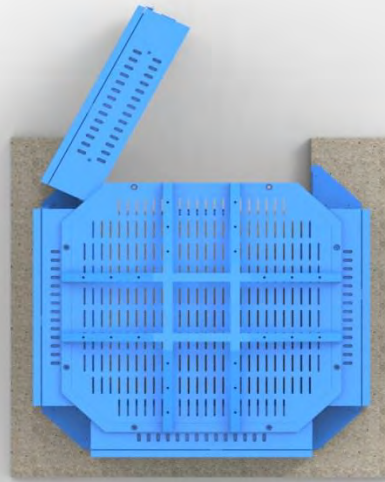
LCD Signs Site Three  
Door opening direction

North Site-3 S/N #14

West Site-3 S/N #13

East Site-3 S/N#15

South Site-3 S/N#16



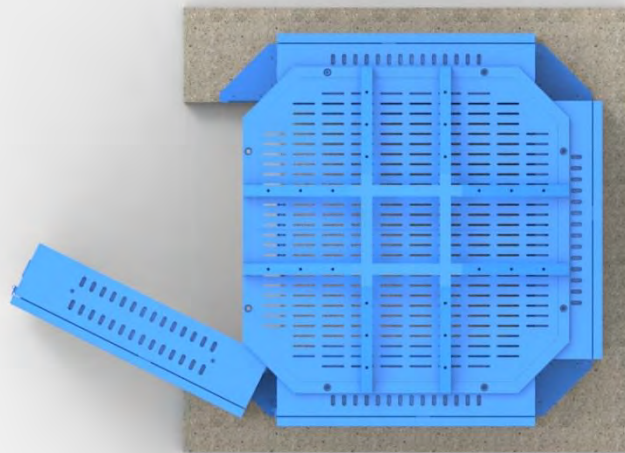


# LCD Signs Site Four

## Door opening direction

North Site-4 S/N#007

West Site-4 S/N#05  
(Logo Glass Damage)



East Site-4 S/N#06

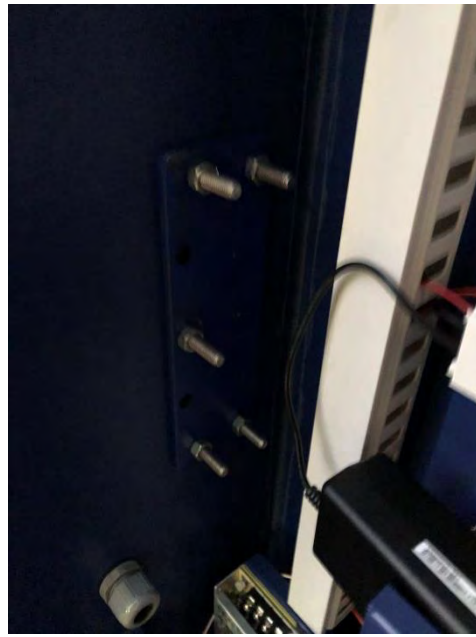
South Site-4 S/N#08





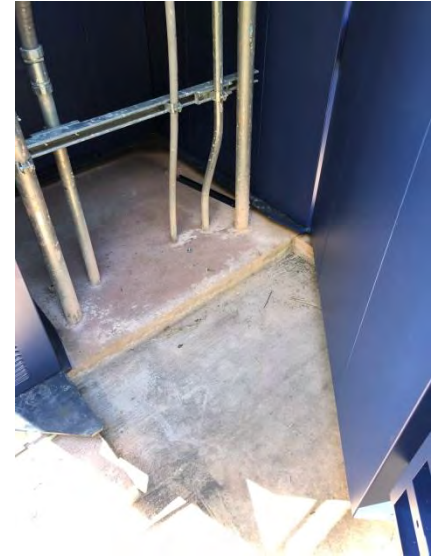
# Door Hinge Operation







# Baseplate Cutting and Hinge Colliding are Cutting



## LED Side Signs Retrofit and Wiring

Site-One :East( S/N#11) Extended LED power wires

When the door open, wires disconnected. Solve with extended wiring. Testing success.



Unidentified damaged one glass ( Wrapping not damaged )

1: Site-Four S/N #5 Logo cover glass crack ( Replace glass )

\* Deliver one new glass - Maintenance



## Site-Four Kiosk 4: Side bar cutting, Base cutting, Caster, Painting





## Site-Two Kiosk 2: Welding work and Caster Installation Work



# Kiosks after finishing retrofit caster: Kiosk 1 and Kiosk 2



Kiosk 1



Kiosk 2

# Kiosks after finishing retrofit caster: Kiosk 3 and Kiosk 4





**Jackson**  
HEALTH SYSTEM



**Jackson**  
HEALTH SYSTEM

→ Emergency

↘ ACC East & West

Bascom Palmer  
Highland/MTI  
Holtz Children's

→ Jackson Behavioral  
Jackson's Women  
Pharmacy  
Red Garage  
Ryder Trauma

← Clark DTC  
Jackson Memorial

↙ Green Garage  
Rehab Hospital

Information

→ Emergency

↘ ACC East & West

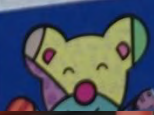
Bascom Palmer  
Highland/MTI  
Holtz Children's

→ Jackson Behavioral  
Jackson's Women  
Pharmacy  
Red Garage  
Ryder Trauma

← Clark DTC  
Jackson Memorial

↙ Green Garage  
Rehab Hospital

Holtz  
Child



Enfomasyon

Information

# Jackson HEALTH SYSTEM



## Urgent Care You Can Trust In Miami-Dade



**Country Walk**  
13707 S.W. 152nd Street  
Open Every Day, 8 a.m. to 8 p.m.



**Cutler Bay**  
18910 South Dixie Highway  
Open Every Day, 8 a.m. to 8 p.m.

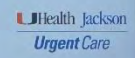


**Doral**  
7400 N.W. 104th Avenue  
Open Every Day, 8 a.m. to 8 p.m.



**Keystone Point**  
13120 Biscayne Boulevard  
Open Every Day, 8 a.m. to 8 p.m.

Learn more at  
[JacksonUrgentCare.com](http://JacksonUrgentCare.com)



EMERGENCY

